



# INSTALLATION GUIDE



**Karran USA**  
(866) 452-7726  
[info@karran.com](mailto:info@karran.com)

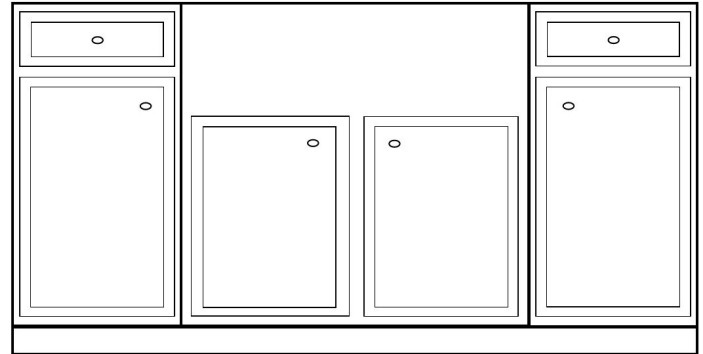


QUARTZ QA APRON FRONT SINKS

Before beginning the installation of your QA Series apron front sink, please check your sink carefully for any damage. Also check compliance with all your local building and plumbing codes.

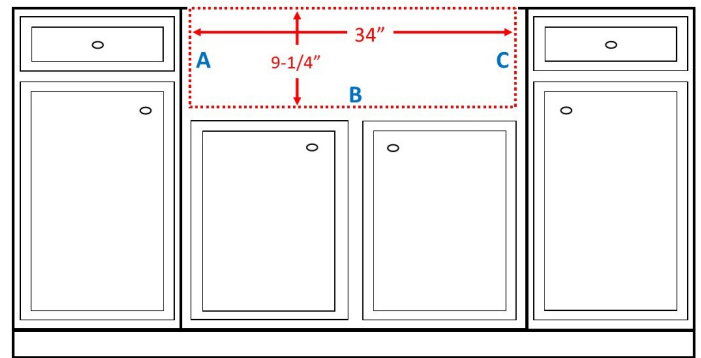
The following outlines how to install a QA apron front sink in a farmhouse sink base cabinet. It is recommended that only experienced installers be used to install your new apron front sink. Due to the custom nature of this installation, no cutout template is included with your sink. We require that you provide your cabinetmaker with the actual sink prior to the fabrication/installation of the cabinetry.

Choose an appropriately sized farmhouse sink base cabinet (36" wide). Measure your sink apron width and height. Your sink apron should be 34" wide from side to side and 9-1/4" from top to bottom, but measure your sink to confirm these exact dimensions. Tape off the face frame of the cabinet where you are going to be cutting the cabinet face frame. Use a masking or painters tape.

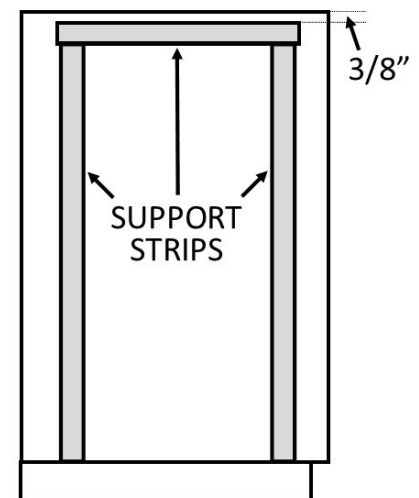


FRONT VIEW OF CABINETS

Next trace a rectangle onto the face frame, flush to the top of the face frame and centered on the panel from left to right. This rectangle will be the exact dimensions of the sink apron (**34" x 9-1/4"**). Use a square to produce an accurate rectangle. Using a sharp, fine cut blade in a jigsaw or similar saw, make clean, straight cuts on lines **A**, **B** and **C**. Remove excess face frame panel. Sand the cut edges of the opening to ensure they are clean and straight. Note that you may need to sand further when test fitting the sink.



Once the cabinet face frame has been prepped, support strips need to be screwed into the side walls of the cabinet. Generally 2" x 4" wood strips make a suitable support system, cut to approximately 15" in length. Screw in the strips approx. 3/8" below the top edge of the cabinet wall on either side. Correct and level placement of horizontal supports will allow the sink to sit fully supported on the strips, with the top rim of the sink flush with the tops of the cabinet walls on either side of it. Place vertical supports beneath the horizontal supports for additional strength.



SIDE VIEW OF CABINET

Slide the sink into place. The side aprons on either side should slide about 1/2" into the cabinet face frame opening. If side aprons are hindered by the face frame, remove the sink and sand edges of the face frame sufficiently to allow side aprons to slide into cabinet face frame by 1/2". The bottom of the apron will be flush with the horizontal cut in the face frame. Your sink is now in the correct position.

When cutting the countertop, it is recommended that the sink be installed with an 1/8" positive reveal. A negative reveal may also be used if preferred. This should be discussed with your customer for approval prior to cutting the countertop. When installing the countertop, ensure an appropriate amount of silicone is placed on the rim of the sink to seal it to the underside of the stone countertop. Should you have any additional questions regarding the installation of an apron front sink, please call our customer service department at 866.452.7726.