



# INSTALLATION GUIDE

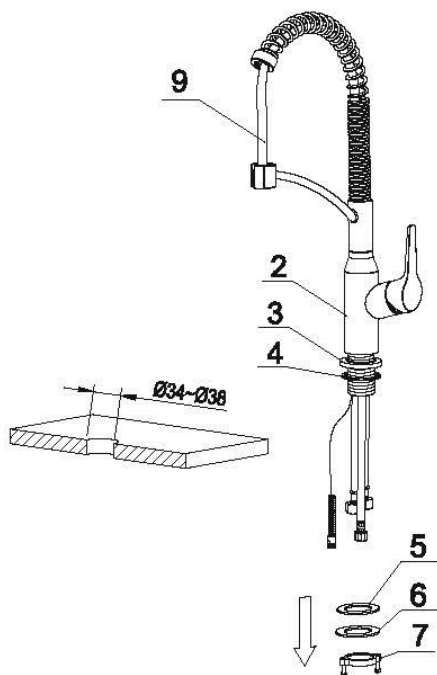


**Karran USA**  
(866) 452-7726  
[info@karran.com](mailto:info@karran.com)



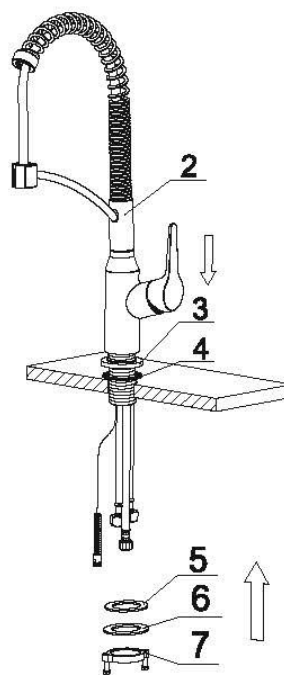
KITCHEN FAUCETS

The below instructions are a general installation guide to our Karran kitchen faucets. Your specific model may differ slightly from these steps shown here. Please refer to the model-specific installation guide that came with your new faucet. If we can be of additional assistance please contact us at 866-452-7726 or [info@karran.com](mailto:info@karran.com).



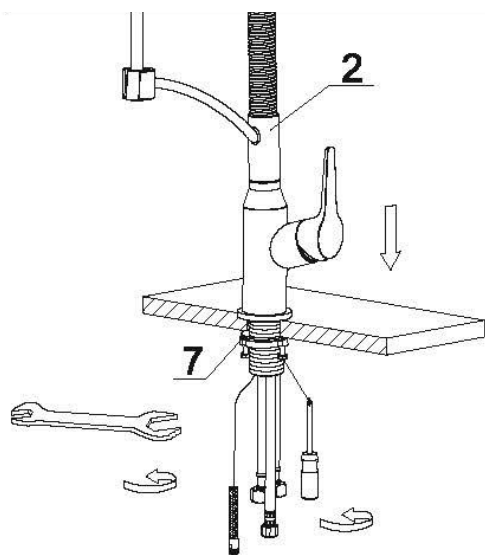
### Step 1

Remove mounting hardware (7), metal washer (6) and rubber washer (5) from the main faucet body (2).



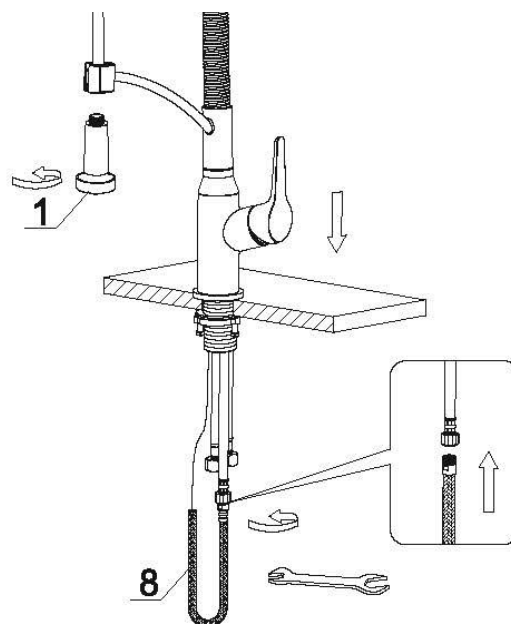
### Step 2

Insert the main body into hole with the base (3) and rubber washer (4). Re-install the rubber washer (5), metal washer (6) and mounting hardware (7) from the bottom.



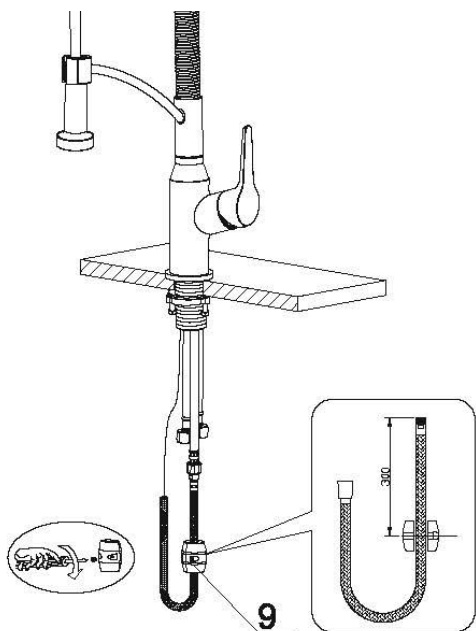
### Step 3

After adjusting the direction of the main body (2), tighten the mounting hardware (7) by hand and tighten the screws with a Philips screwdriver.



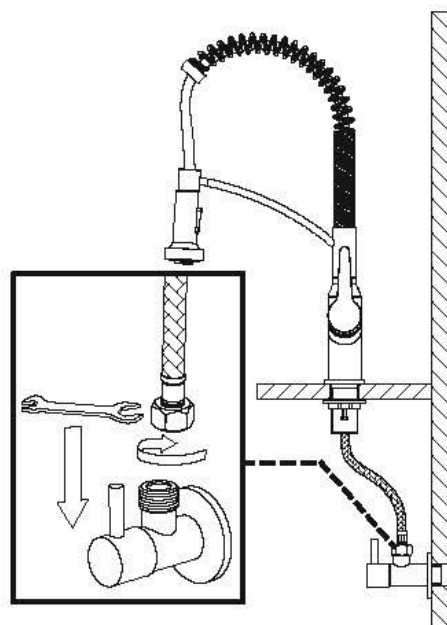
### Step 4

Connect the spray hose (8) and spray head (1) to finish.



### Step 5

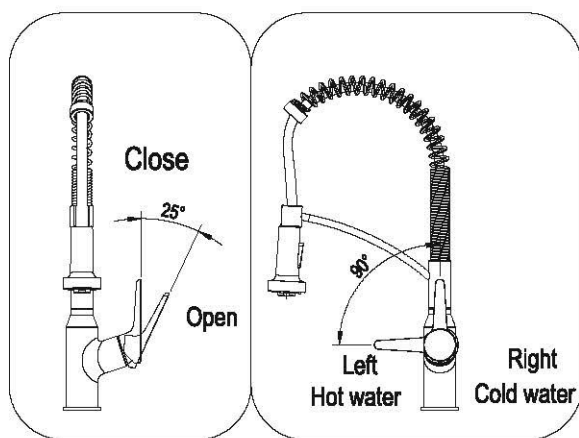
Attach the weight (9) to the spray hose (8).



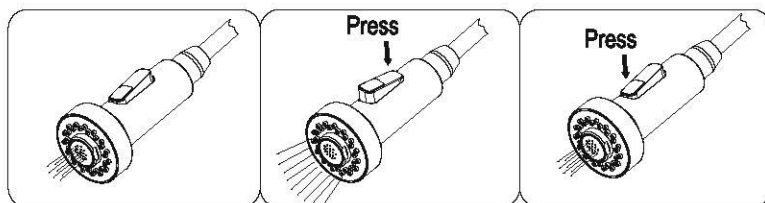
### Step 6

Connect the water lines to the outlets tightly. Turn on the outlets and check for leaks.

## Operating instructions for your faucet



Open the handle lever to turn the water on. Turn the handle lever to the left to increase hot water flow with higher temperature, while lower the water temperature by operating reversely.



Operation of the spray diverter:

- 1) When first turned on, the water comes from the central aerator nozzle.
- 2) Press the back of the button and water will divert to the spray nozzles.
- 3) Press the front of the button and water with divert to the central aerator nozzles.
- 4) Diverter button automatically returns to normal position once handle is closed.