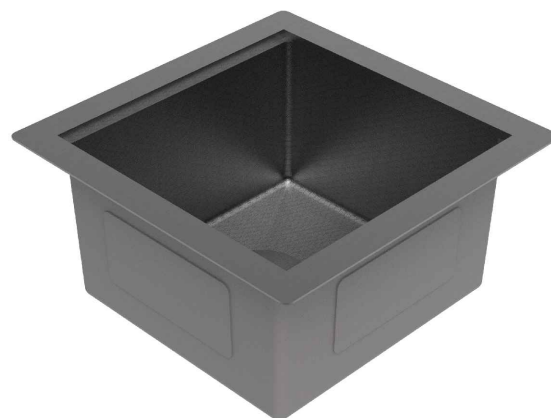


Series	Matrix
Material	16 Gauge, Type 304 stainless steel
Installation Type	Undermount
Configuration	Single bowl
Finish	Embossed hexagon finish
Overall Dimensions	17" x 17" x 9"
Bowl Dimensions	14" x 13 1/4" x 8 3/8"
Drain Size	3 5/8"
Finishes Available	Stainless Steel, Gunmetal Grey
Minimum cabinet size	21"
Template Included	Yes
Clips Included	Yes
Drain Location	Rear
Accessories Included	Strainer, Cutting board and Strainer cap

Shown in Gunmetal Grey



MODEL	ACCESSORY
HSU1717SBGG	Cutting Board - CB1414BLR5
HSU1717SBGG	Strainer Cap - L-CAPGG
HSU1717SBGG	Strainer - L-1GG
HSU1717SBSS	Cutting Board - CB1414BLR5
HSU1717SBSS	Strainer Cap - L-CAP
HSU1717SBSS	Strainer - L-1

MODEL	FINISH
HSU1717SBGG	Gunmetal Grey
HSU1717SBSS	Stainless Steel

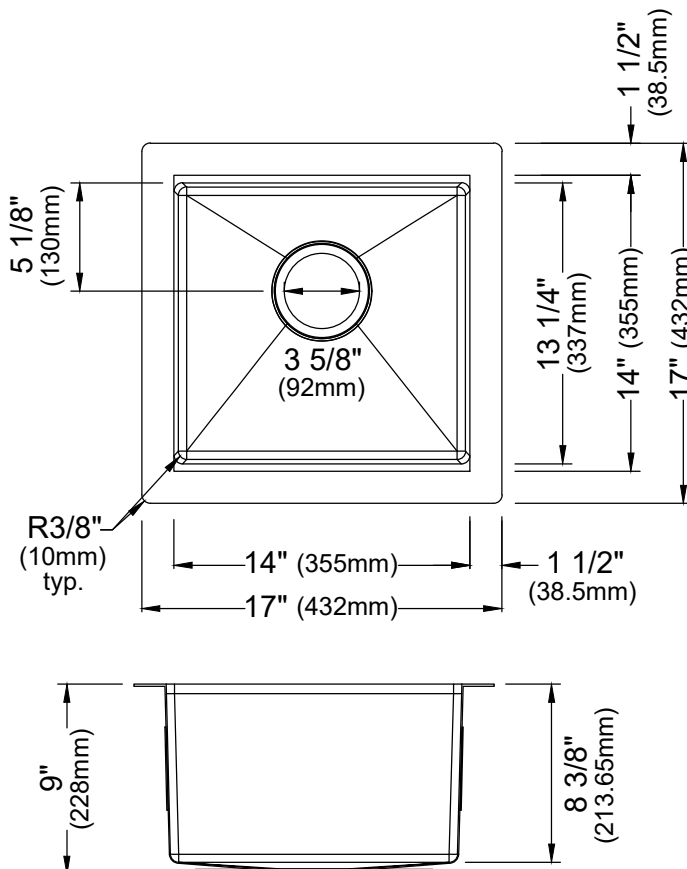
Stocked Color Options



Stainless Steel



Gunmetal Grey



Listing and certifications:
cUPC

Limited lifetime warranty