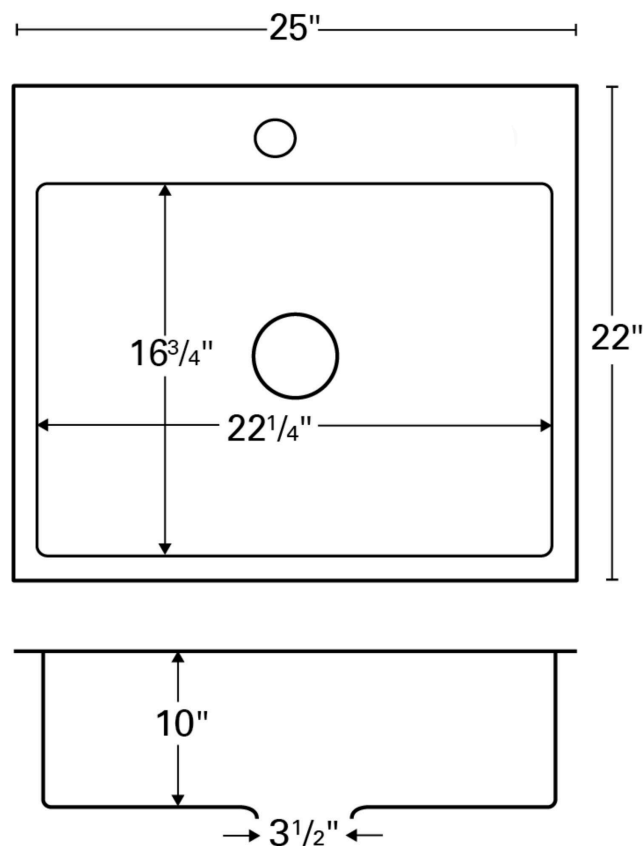
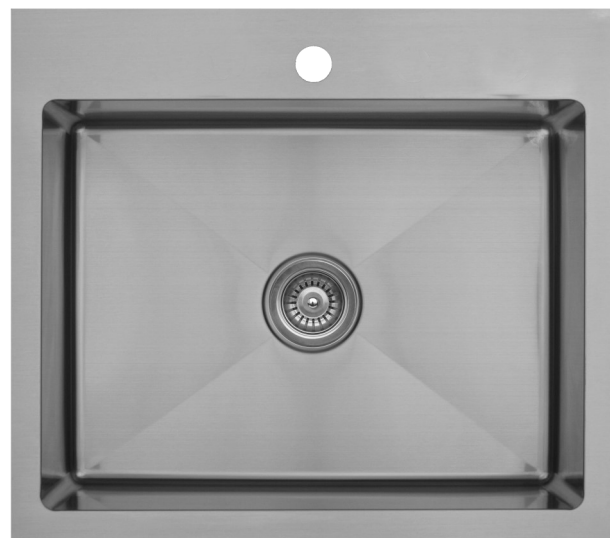
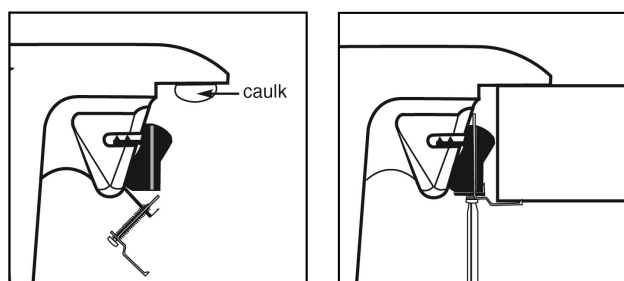


Karran Elite Series stainless steel kitchen sinks are manufactured from durable 16 gauge stainless steel that makes them tough and resilient to even the toughest daily tasks. Each sink is finished with an elegant, durable soft satin brushed finish that resists and disguises surface scratches. Designed to be top mounted in all types of countertop materials.

<b>Series:</b>	Elite Series
<b>Material:</b>	16 Gauge, Type 304 stainless steel
<b>Installation Type:</b>	Top mount
<b>Configuration / Style:</b>	Single bowl
<b>Finish:</b>	Soft satin brushed finish
<b>Overall dimensions:</b>	25" x 22"
<b>Bowl dimensions:</b>	22-1/4" x 16-3/4" x 10"
<b>Drain size:</b>	3-1/2"
<b>Min. cabinet size:</b>	27"
<b>Template included:</b>	Yes
<b>Clips included:</b>	Yes
<b>Accessories included:</b>	1 x Bottom Grid and 1 x Basket Strainer



#### INSTALLATION PROFILE



#### PROJECT INFORMATION

PROJECT: \_\_\_\_\_

CONTACT: \_\_\_\_\_

DATE: \_\_\_\_\_

NOTES: \_\_\_\_\_

\_\_\_\_\_

\_\_\_\_\_

**APPROVAL:**

DXF File	Care Guide	Warranty
----------	------------	----------

We reserve the right to update product specifications without notice. Please visit [karran.com](http://karran.com) for the most current specification sheets. All dimensions are accurate to 1/4". REV 05-2020